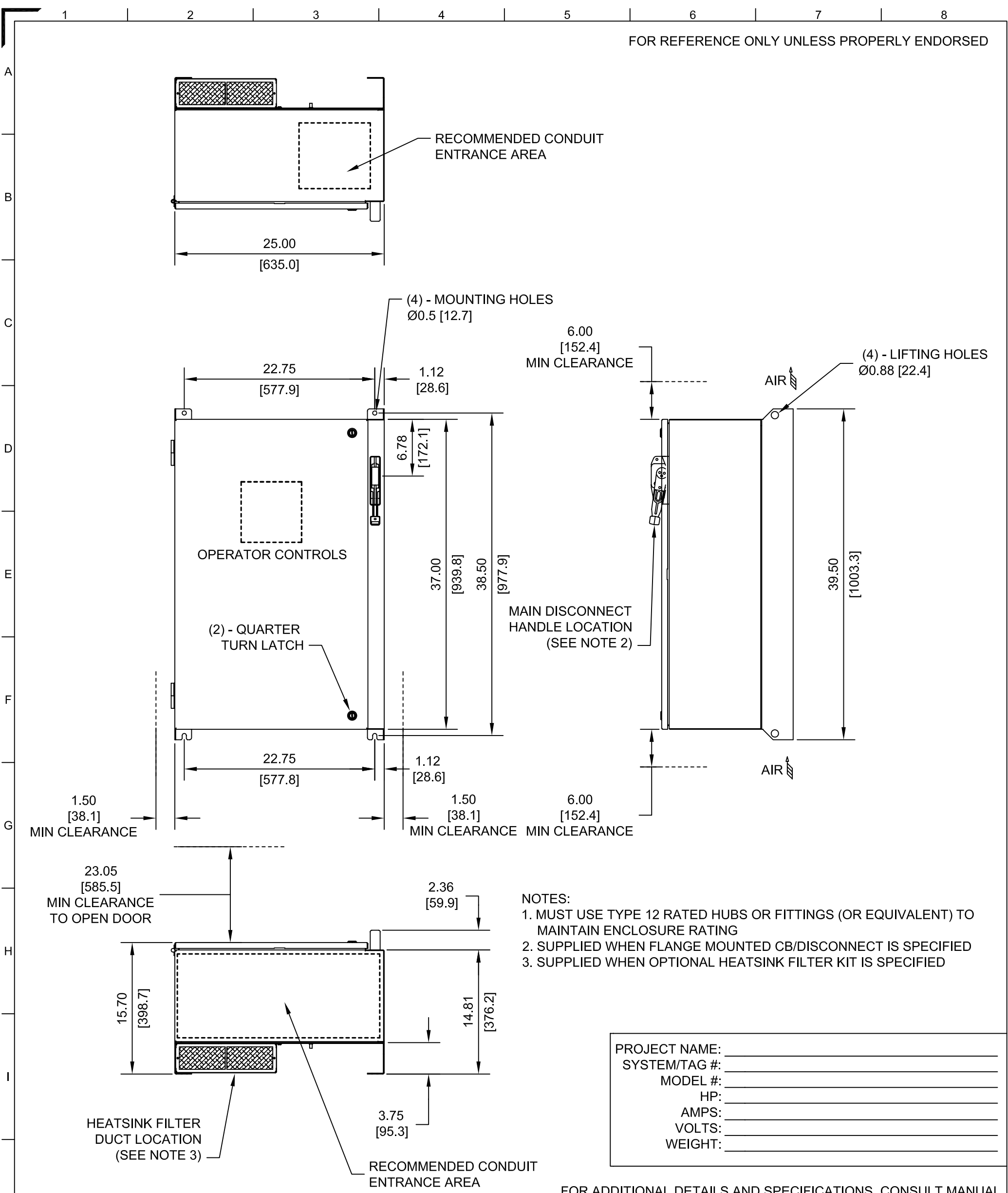


FOR REFERENCE ONLY UNLESS PROPERLY ENDORSED



FOR ADDITIONAL DETAILS AND SPECIFICATIONS, CONSULT MANUAL

DIMENSIONS ARE IN INCHES AND [MM]

YASKAWA
A World of Automation Solutions™

THIS DOCUMENT AND INFORMATION CONTAINED IN IT ARE CONFIDENTIAL, AND CANNOT BE COPIED OR DISCLOSED IN WHOLE OR IN PART WITHOUT THE EXPRESS WRITTEN CONSENT OF YASKAWA ELECTRIC AMERICA INC.

DRAWN: SR	DATE: 4.25.05	TITLE: DIMENSION DRAWING ENCLOSURE 37H X 25W X 16D NEMA TYPE 1/12, IP54	
CHECKED: DC	DATE: 4.26.05	SIZE: A	REVISION: R00
TECH:	DATE:	PAGE: 01 of 01	
APPROVED: JZ	DATE: 4.26.05	DRAWING #: DD.AFD.131.01	
ORIGINAL DESIGN: SR	DATE: 4.25.05		